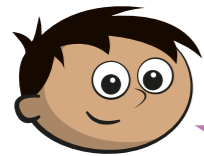


Subtract 2 mixed numbers

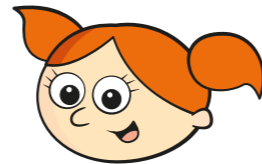
- 1 Amir and Alex are working out $3\frac{1}{2} - 2\frac{1}{4}$



Amir

First subtract 2 from 3,
then subtract $\frac{1}{4}$ from $\frac{1}{2}$
That leaves $1\frac{1}{4}$

Convert to an improper
fraction first, $\frac{7}{2} - \frac{9}{4}$, then
 $\frac{14}{4} - \frac{9}{4} = \frac{5}{4} = 1\frac{1}{4}$



Alex

Whose method do you prefer?

- 2 Use your preferred method to complete the subtractions.

a) $4\frac{4}{5} - 2\frac{3}{10} = 2\frac{1}{2}$

c) $16\frac{1}{2} - 5\frac{1}{4} = 11\frac{1}{4}$

b) $3\frac{5}{8} - 1\frac{1}{4} = 2\frac{3}{8}$

d) $10\frac{5}{6} - 5\frac{5}{12} = 5\frac{5}{12}$

What do you notice about your answer to part d)?

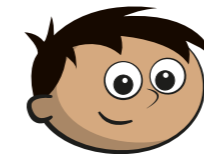
- 3 Car A travels for $15\frac{1}{4}$ miles.
Car B travels for $21\frac{5}{12}$ miles.



How much further does Car B travel than Car A?

Car B travels $6\frac{1}{2}$ miles further than Car A.

- 4 Amir and Dora are working out $4\frac{1}{5} - 1\frac{2}{5}$



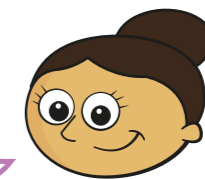
Amir

You can't use my
method because you can't do
 $\frac{1}{5} - \frac{2}{5}$

- a) Do you agree with Amir?

- b)

I know that $4\frac{1}{5} = 3\frac{6}{5}$



Dora

How does this help you to work out the subtraction?

$3\frac{6}{5} - 1\frac{2}{5} = 2\frac{4}{5}$

- c) Complete the calculation.

$4\frac{1}{5} - 1\frac{2}{5} = 2\frac{4}{5}$

5 Complete the subtractions.

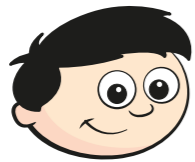
a) $4\frac{4}{5} - 2\frac{9}{10} = 1\frac{9}{10}$

c) $5\frac{2}{7} - 2\frac{11}{14} = 2\frac{1}{2}$

b) $3\frac{5}{8} - 1\frac{3}{4} = 1\frac{7}{8}$

d) $2\frac{1}{6} - 1\frac{7}{18} = \frac{7}{9}$

6 Dexter is subtracting fractions.



$5\frac{2}{3} - 3\frac{5}{6} = 2\frac{1}{6}$

Explain the mistake that Dexter has made.

He has found the difference between the wholes ($5-3=2$) and the difference between the fractions ($\frac{2}{6} - \frac{5}{6} = -\frac{1}{6}$) rather than doing $5\frac{2}{3} - 3\frac{5}{6} = 4\frac{4}{6} - 3\frac{5}{6} = 1\frac{5}{6}$

7 Here are some number cards.

$3\frac{1}{12}$

$4\frac{1}{2}$

$2\frac{5}{24}$

$4\frac{5}{6}$

a) Use two of the number cards to find the smallest difference.

$4\frac{5}{6} - 4\frac{1}{2} = \frac{1}{3}$

b) Use two of the number cards to find the difference closest to 2

$4\frac{5}{6} - 3\frac{1}{2} = 1\frac{2}{3}$

8 Complete the magic square.

The total of each column is $5\frac{7}{20}$

The total of each row is $5\frac{7}{20}$

$1\frac{1}{2}$	$1\frac{3}{5}$	$2\frac{1}{4}$
$2\frac{3}{10}$	$1\frac{7}{20}$	$1\frac{7}{10}$
$1\frac{11}{20}$	$2\frac{2}{3}$	$1\frac{2}{3}$

9 A marathon is $26\frac{1}{5}$ miles.

Dexter has run $18\frac{1}{10}$ miles.

Eva has run $19\frac{3}{5}$ miles.

a) How much further has Eva run than Dexter?

$1\frac{1}{2}$ miles

b) How much further does Eva need to run to complete the marathon?

$6\frac{2}{3}$ miles

