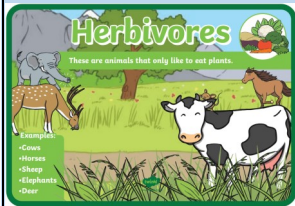
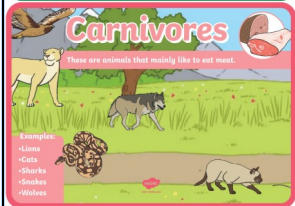


Recapped Knowledge and Vocabulary



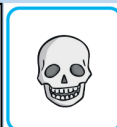
Herbivores are animals that only eat plants: cows, horses, sheep, elephants, deer.



Carnivores are animals that eat mostly meat: lions, cats, sharks, snakes, wolves.



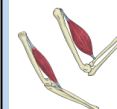
Omnivores are animals that eat plants and meat: humans, bears, monkeys, seagulls.



Bones such as the skull, rib cage, pelvis and spine protect important organs.



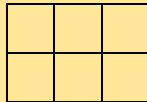
Bones such as the femur, tibia and spine support our body allowing us to stand and



Muscles work in pairs to enable us to move.

Working Scientifically Skills:

To draw tables to collect results.

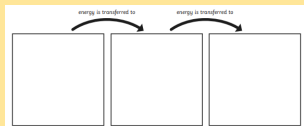


To collect measurements minutes and seconds.

To recognise when secondary research is needed.



To begin to decide which type of enquiry to use.



To read and draw own food chains.

New Vocabulary

Definitions in New Knowledge section.

Digestive system, digestion, mouth, teeth, saliva, oesophagus, stomach, small intestine, large intestine (colon), rectum.

Teeth, incisor, canine, molar, premolars.

Food chains, producer, predator, prey.

New Knowledge:

The Digestive System



Digestion begins in the **mouth**. The **teeth** help break down the food into smaller pieces.

The **oesophagus** connects your mouth and your **stomach**. It has muscles in it that work in waves to move the food you have eaten down into your stomach.



In the **stomach**, food is broken down by acids and enzymes. This broken-down substance is called **chyme**. The stomach connects to the **gall bladder**, **liver** and **pancreas**, which are other organs involved in the digestion process.

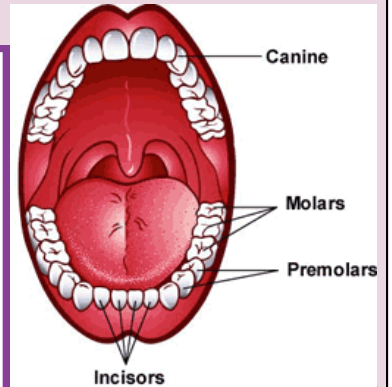
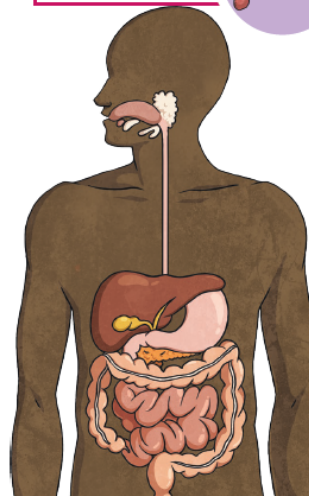


The **small intestine** breaks down the food mixture even more. This is so the body can absorb the vitamins, minerals, proteins, carbohydrates and fats it needs.

All the food material that is not needed passes through the **large intestine**. This is where any last water or minerals are absorbed into the blood.



The rest of the unwanted food prepares to leave the body as **poo**. It travels through to the **rectum**, where it stays until you go to the toilet.



Incisors cut and bite.

Canines rip and tear meat from bones.

Premolars and molars chew food in to small pieces.

Food Chains:
A food chain shows how energy is passed between plants and animals.

Sun gives out light energy that plants need to grow (grass).

Herbivores or omnivores eat the plants (grasshopper).

These then become prey to other omnivores and carnivores (predators).

